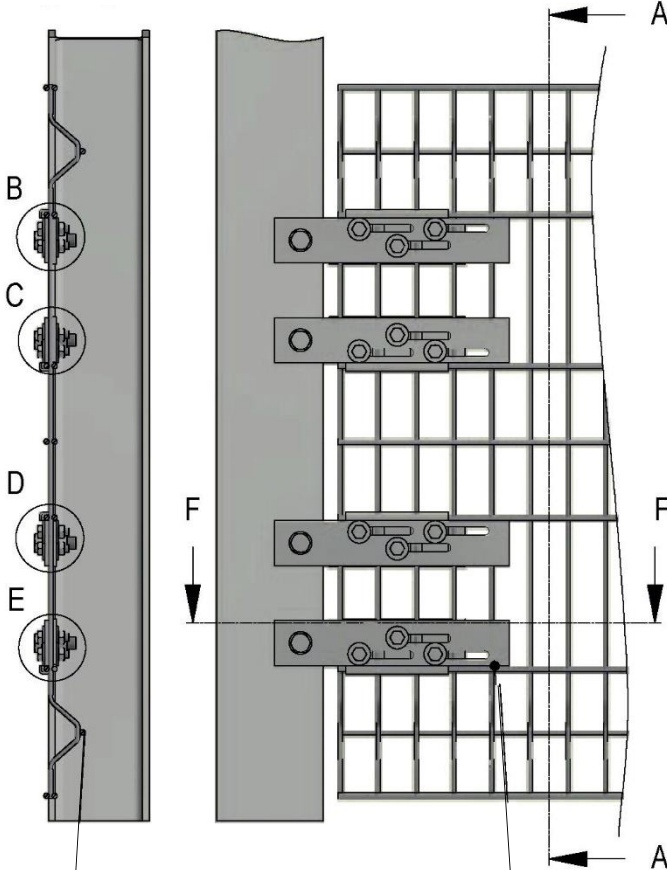
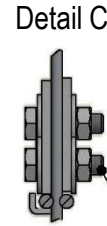
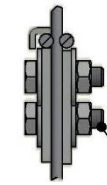




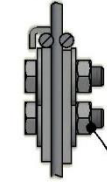
Section A-A



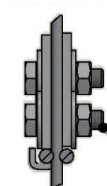
Detail B



Detail D



Detail E



**Note:**

An extended ramp flange is used for connections in ramp inclines.

Tightening torques for bolts:  
M10 = 30 Nm  
M16 = 100 Nm



**Assembly notes:**

The crest must always be placed in the first grid field of the INTEGRA-pw starting with the first grid field, so that a maximum slipping distance is achieved.

For fastenings, see data sheet U005 and U006

The bulges can point either towards or away from the parking deck.

Section F-F

